

I-35 SMART WORK ZONE

Highways for Life Grant Demo Project

Project

- ▣ Construction of a new interchange on I-35
- ▣ Location: SW of Kansas City, KS
- ▣ Smart Work Zone
 - Delay Information
 - Queue Detection and Advanced Warning
 - Variable Speed Limits
 - Cameras for Visual Confirmation
 - Public Website
- ▣ Retain Equipment
- ▣ MIST
- ▣ Hits the road in two weeks

HfL Funding

- ▣ Applied May 2011
 - Improve safety & reduce congestion
 - Crash rates
 - Congestion
 - User satisfaction
- ▣ Notified August 2011, specs complete and funding allocated September 2011
- ▣ FAST turn around, FAST decisions
 - ITS project tied to construction project

DATA

- ▣ The main purpose
 - Kansas data and use
 - Lane Closure Guide
 - Incident detection
- ▣ The Big Picture re: SWZ Data
 - Archive collected data
 - Searchable in conjunction with Kansas data
 - Managed by someone else 😊

Challenges

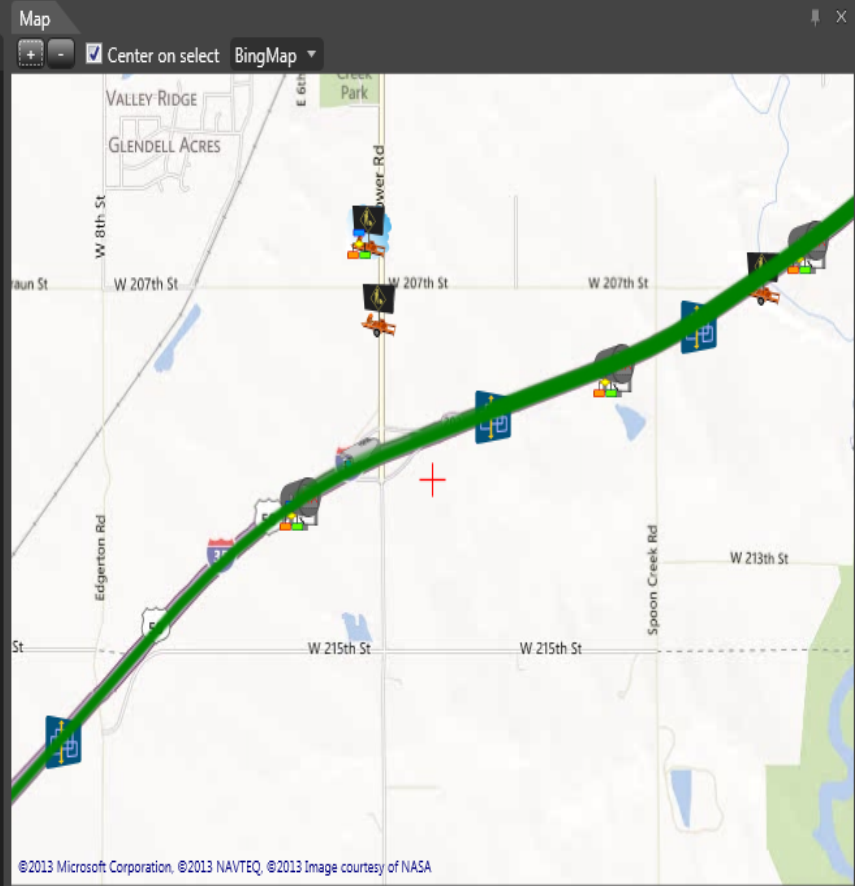
- ▣ Working with the low bidding contractor's low bidding vendor
 - Read the specs???
 - Actively engaged???
 - Verified experience???
- ▣ Details...Details...Details
 - Time constraints
 - VSL algorithms
- ▣ Permanent ITS software after the project - MIST
- ▣ Logistics after the project

Rewards

- ▣ Vendor's GREAT programming team and behind-the-scenes product
- ▣ Get to keep the equipment
- ▣ Work Zone ITS program in Kansas
 - Jump Start, maybe by 10 years
 - Equipment – each on its own portable trailer
 - ▣ 18 PCMS
 - ▣ 6 Cameras
 - ▣ 8 Variable Speed Limit Signs
 - ▣ 21 Wavetronix Traffic Sensors



Type	Status	Name	Value	Image
		I-35 NE of Homestead (CCTV 03)		
		I-35 NW of Gardner Rd (CCTV 05)		
		I-35 NW of Sunflower (CCTV 01)		
		I-35 SE of 199th St (CCTV 04)		
		I-35 SE of Spoon Creek Rd (CCTV 02)		
		I-35 SW of W 175th-Hwy 56 (CCTV 06)		
		PCMS 01 - NB I-35 Just west of Vermont Terrace Bridge		
		PCMS 02 - SB K-33, S of E 10th St		



Properties

<no name>